

- no entry
- no cycling
- no walking off marked trails
- public campsite, RV campground
- museum, archaeology park
- tourist information centre
- parking lot
- educational trail
- marked hiking trails
- ruins
- nature reserve, monument
- national nature reserve, monument
- protected area boundary
- state border

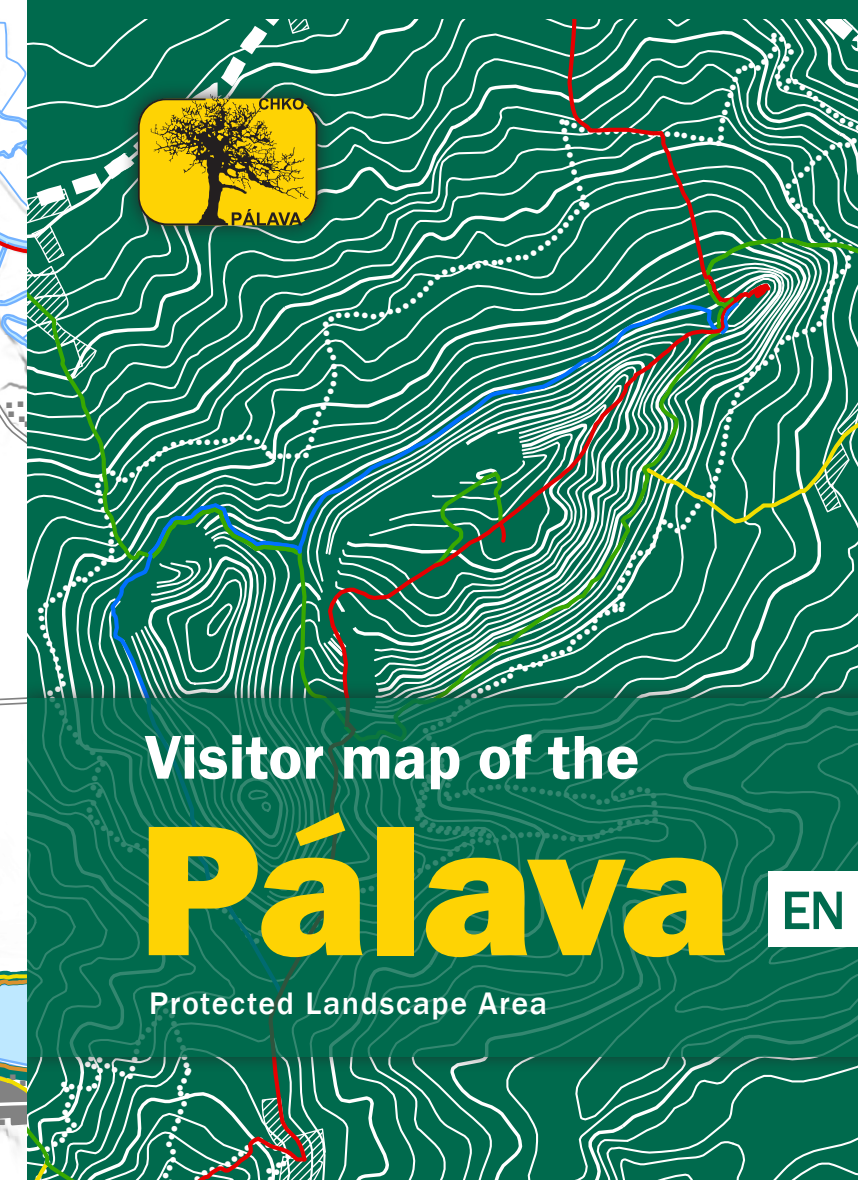
## Tourist information centers

Tourist information centres offer visitors information services about the Pálava tourist area. The spectrum of their services is wide, from providing information on services, tourist attractions, cultural events and transport connections, through booking accommodation, board, wine cellars to organizing adventure programs.

In the information centres you will also find a wide range of tourist maps, guides, professional publications, books, postcards, collectible souvenirs and local products.

<b>TIC Mikulov</b>	<b>TIC Pavlov</b>
Náměstí 158/1	Na Návsí 88
+420 724 987 900	+420 602 500 567
tic@ticmikulov.cz	tic@ticpavlov.cz
www.ticmikulov.cz	www.obec-pavlov.cz
<b>TIC Pasohlávky</b>	<b>TIC Dolní Dunajovice</b>
Pasohlávky	Poštovní 189
+420 519 427 624	+420 519 500 054
tic@pasohlavky.cz	tic@dolni-dunajovice.cz
www.pasohlavky.cz	www.dolni-dunajovice.cz

**Visitor map of the Pálava Protected Landscape Area**  
Text, photos, map and typesetting: Jan Miklín  
Map source: Data50, 2025 © Czech Surveying and Land Register Office, www.cuzk.cz;  
The Nature Conservation Agency of the Czech Republic (NCA); OpenStreetMaps.org  
Published by the Pálava Destination Company in cooperation with AOPK ČR, 2025  
**www.palava.cz**







## Let's protect Pálava together

To keep Pálava's nature in the best possible condition we ask you to follow a few simple rules. In some places, signs or barriers point out the most important restrictions. Even where there are none, be considerate – towards nature, its inhabitants and other visitors.



**Do not go off marked trails.** In national nature reserves (Děvín, Tabulová), wandering off the trails is prohibited by law. We would be grateful, though, if you would stick to the marked paths elsewhere as well, especially on Holy Hill and Turoid. There are several reasons: mainly disturbing animals (for example nesting birds) and damaging places with low resistance to trampling.



**Do not cycle on hiking trails.** Cycling is prohibited in the Děvín National Nature Reserve, Tabulová National Nature Reserve and Holy Hill Nature Reserve. Bikes destroy trails and cyclists endanger hikers. Use the cycle paths in the foothills of Pálava for cycling.



**Park in designated parking lots only, do not drive on forest and field roads.**



**Spend the night in campsites and accommodation facilities.** Camping and making fires outside of designated areas is prohibited in the PLA. This also applies to sleeping in recreation vehicles.



**No garbage belongs in nature,** even a paper tissue takes some time to decompose. At the same time, do not take anything from nature that is its own: stones, fossils, flowers – only in your camera.



**Respect the rules regulating sports activities.** Paragliders can take off from two locations, on Stolová Hill and Děvín. Climbers can use the terrains on Martinka and Trůn. Fishing is prohibited in the Janičův Hill Quarry. Flying a drone in the PLA territory (outside the IV. protection zone) requires a permit from the PLA administration. More information about individual activities can be found on the website or on information panels in the terrain.



## Get to know Pálava along nature trails

### Děvín Nature Trail

The trail follows marked hiking routes in the Děvín National Nature Reserve. Along its route, you will learn information about geology, plants and animals, forestry and water management, history and other areas related to Děvín and its surroundings.

18 information boards 11 km medium

### Turoid Nature Trail

A circular nature trail at the bottom of a former quarry in the Turoid Nature Reserve. Its panels talk about the history and transformation of Turoid, interesting facts about the cave and its inhabitants, and interesting species of plants and animals that can be found here. The trail also includes a geopark with samples of dozens of rocks from all over the Czech Republic.

8 information boards 0.5 km easy

### Janičův Hill Quarry Nature Trail

The shortest nature trail in the area of the former limestone quarry in the Janičův Hill Quarry Nature Monument is focused mainly on history and inanimate nature. It also answers the most frequently asked questions of visitors.

9 information boards 0.2 km easy

### Svatý kopeček Nature Trail

The trail maintained by the city of Mikulov will introduce you to the history of the Stations of the Cross and the unique nature of the Svatý kopeček (Holy Hill) Nature Reserve. It is complemented by several resting places with panoramic views.

11 information boards 3.5 km medium

### Lednice Ponds Nature Trail

The trail runs along the banks of the Nesyt, Hlohovecký, Prostřední and Mlýnský ponds in the Lednice Ponds National Nature Reserve. The information panels focus on the fauna and flora of the ponds, pond management and dendrology. It also includes ornithological observation sites.

14 information boards 12 km easy



## Protecting means caring

The fact that we have such an immensely diverse nature in Pálava is the result of traditional farming on small areas dating way back into the past. In order to maintain our natural wealth, adequate care is necessary, so-called conservation management provided by the Nature Conservation Agency of the Czech Republic, the Pálava Protected Landscape Area Administration, and specific measures implemented mainly by local entities.

The main methods of care for the reserves include:

- **grazing** – most often you can encounter sheep, goats, horses and ponies;
- **mowing grasslands, leaving some areas uncut** so that organisms can survive there;
- **cutting out invasive woody plants** that grow over the most precious parts of the steppe;
- **eliminating invasive and expansive species**, such as *Ailanthus* (Tree of Heaven) or Black Locust;
- **planting trees** and caring for them;
- setting fields aside;
- creating pools, **anti-erosion measures**.

This care is financed from the state budget and international programs.



## Recreation

### Public campsites

Klentnice quarry ☎ +420 602 187 401 (Z. Veselský)

### RV campground

Autokemp Merkur, Pasohlávky

☎ +420 519 427 714 ✉ kemp@pasohlavky.cz 🌐 kemp-merkur.cz

Camping Mikulov

☎ +420 777 560 390 ✉ camping.mikulov@gmail.com

🌐 campingmikulov.cz

Camp Pálava, Nové Mlýny

☎ +420 777 703 052 ✉ info@novemlyny.cz 🌐 novemlyny.cz

Kemp Mars, Šakvice

☎ +420 602 518 725 ✉ recepce@kempmars.cz 🌐 kempmars.cz

Kemp U vody, Dolní Věstonice

☎ +420 774 369 156 ✉ kemp@ulangru.cz 🌐 ulangru.cz



## The Pálava House of Nature



The Pálava House of Nature is a visitor center for the Pálava Protected Landscape Area. Its main focus is the modern exhibition that presents Pálava as a place with an extraordinary diversity of rare plants and animals. It also shows how people have shaped the local landscape through their farming for millennia. In addition to the exhibition itself, we offer:

- guided tours,
- educational programs for schools,
- excursions, lectures and other events for the public,
- information about the Pálava Protected Landscape Area, sale of publications and souvenirs.

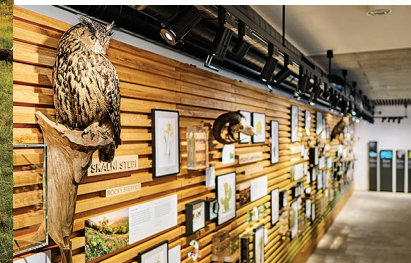
📍 Hlavní 11, 691 29 Dolní Věstonice

✉ dumprirody@rmm.cz

☎ +420 546 215 109

🌐 www.dppalava.cz

www.dumprirody.cz/palava



### Stellplatz Pálava

☎ +420 606 910 303 ✉ info@stellplatz-palava.cz

🌐 www.stellplatz-palava.cz

### Unicamp, Přítluky

☎ +420 606 052 144 ✉ info@unicamp.cz 🌐 unicamp.cz

YachtClub Dyje Břeclav, Sportovní středisko Pavlov

☎ +420 725 990 809 ✉ recepce@ycdyje.cz 🌐 ycdyje.cz

### Swimming

Swimming pool Riviéra Mikulov 🌐 www.tedosmikulov.cz

RV campground Merkur Pasohlávky 🌐 www.kemp-merkur.cz

Aqualand Moravia Pasohlávky 🌐 www.aqualand-moravia.cz

Swimming pool Březí 🌐 www.breziumikulova.cz

Nature Monument Janičův Hill Quarry ⚠ June through September – entrance fee, regulated number of visitors of max. 100 people; ☎ +420 721 707 417 (R. Popovský)



## Pálava online

### palava.aopk.gov.cz

A comprehensive guide to information about the Pálava Protected Landscape Area and the activities of the NCA, the PLA administration on the official website.

### facebook.com/schkopalava

Are you interested in news from Pálava, information about our activities and events for the public, interesting facts about Pálava plants, animals and landscape? Follow the official Facebook profile of the Pálava PLA administration.

### palava.cz

facebook.com/palava | instagram.com/destinace\_palava

News, trip tips, events and other tourist attractions from Pálava.